



**visits4u Case Studies:**

**Casa del Cine**

**Almería, Spain**

## Casa del Cine de Almería

### Almería, Spain

**Title:** Improving accessibility of the cultural offer for tourists

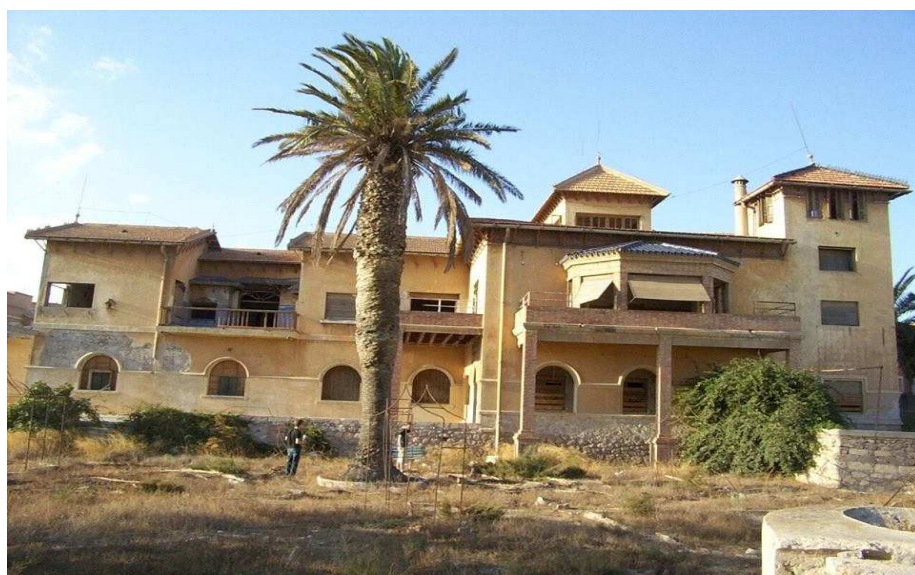
#### **Description**

The Casa del Cine de Almería (Almeria House of Cinema) takes a look back through the cinematographic past of the Province of Almeria and preserves historical memory. Once owned by the Balmes family, it was bought by the local council to be converted into the Film Museum, given that the province had a great connection with the world of film during the 60s and 70s. With the House of Cinema, Almeria has recovered a symbolic place and gained a new cultural space and more visits. In Almeria the tourists came for leisure holiday and for cultural visits. Most of them, prefer to combine their seaside holidays with visits to a number of cultural sites in the area. This combination makes the area particularly interesting for people with disabilities who can find suitable accommodation and accessible cultural attractions.

#### **Becoming inclusive:**

##### **1. Description**

The museum underwent refurbishment works in line with the cities plans to improve accessibility and become a more attractive and inclusive holiday destination.



Before the refurbishment works

Following completion of the works, the House of Cinema today offers these access features and services:

- Entrance with assistance dog.
- There are guided tours from Monday to Saturday.
- Borrow a wheelchair if needed

The museum has a plan for people with disabilities in case of emergency

- The museum has no information on easy reading, but following the signs with an arrow and the name of the room helps to walk into the House
- In the video screening room there are benches to sit on.
- The access road is flat, in the itinerary there is a curb of 11 cm in height with a reduced ford. The free passage width of the pedestrian route is 1.20 m, the pavement is homogeneous.
- Access is through the main door, first through a gate of 2 leaves, which remains open during office hours. Each sheet has a free passage width of 1.16 m.
- Access to the building is done by the main entrance, about 5 m from the entrance, the itinerary is without unevenness.
- Access to the museum by two contiguous doors of similar characteristics, are folding out, glazing and double leaf. Each sheet has a free width of passage of 78 cm. The distance between the two adjacent doors is 2.20 m. One of the leaves, of both doors, remains open during office hours. Public, they have a vertical handle at a height that varies between 10 cm and the 3 m. Doors are not signposted with two horizontal stripes of color contrasted.
- The route to the public service area is accessible
- In the area of attention to the public there is an adequate space for the circulation with the wheelchair, the pavement is homogeneous and there are no overhanging elements that involve risk.

- The front desk has a height of 75 cm. The bottom only allows lateral approach with the wheelchair. In this counter you get the information of the museum and the entrance is acquired.



After the improvements

- The exhibition halls of the museum are distributed on the ground floor and the first plant. Access to all rooms on the ground floor without unevenness and to those of the first by means of the elevator.
- On the ground floor there are 5 exhibition halls and the hall of projections. In the first floor are the rest of the rooms and the viewpoint from the which can be seen the outside garden.
- Access to the different rooms through passageways 90 cm wide, except of the "Inside and Action" room that is accessed by means of a lowered step of 10 cm high and 1.85 m wide.
- In the rooms, there is a space of movement and maneuver for users wheelchair with a width  $\geq 1,50$  m.
- The floor of the rooms is homogeneous and non-slip.
- Vertical display contents such as pictures, movie posters, information panels, decorative elements and movie a height that varies between 1.30 and 1.80 m.
- Horizontal display units and showcases only allow lateral approximation of wheelchair users.



- Projection room "3D" is located in the middle of the route of the ground floor and is accessed by a 1.45 m wide step. The floor of the room is carpeted and horizontal. The carpet does not obstruct the bearing of the wheelchair.
- In its interior there are 4 rows of fixed banks. They are 45 cm high and 50 cm deep. There is no space reserved for people with reduced mobility although wheel chair users can be located at the ends of the seats or in the first row of the room.
- Adapted toilet- The museum house has a single cabin of grooming for both sexes. This is on the 1st floor and the itinerary is accessible by the lift. Adapted toilet cabin - Door: opens inwards with a width 86 cm. Free turning diameter inside: Ø1.50 m. Knob Type: Handle. No lock. Type of lighting: with switch.

#### 4. Main stakeholders / actors

Municipalities in Almeria/Andalusia - dissemination activities and funds for improvements.

Private companies- independent travel agents who promote the destination and Casa del Cine particularly

#### Results and Impact

Almeria is a comfortable city to travel on foot, by public transport or by bicycle and also, these routes are specially designed for people with disabilities, so that they are accessible. There are also several accessible hotels. In the House of Cinema, which has been restored respecting its original structure many visitors with disabilities are welcomed. In many official travel web sites the Museum is marked as „ Accessible for handicapped “ and „ Facilities for Disabled” .The restoration of the building is made by architect Ramón de Torres. Improvements made in the house help many people with disabilities to visit it, increase the attendance and the good infrastructure in the city makes it accessible for recreation and cultural tourism. Additional the travelers staying in the heart of Almeria City or travelling to the outskirts to places such as Aguadulce, Roquetas de Mar, Aguamarga or San Jose - can get their wheelchair adapted taxi booked by Wheelchair Accessible Holiday Taxis. All of these services contribute to making this city and its museums and momuments available to everyone. With Innovations for people with

disabilities make it a popular place for this type of tourists and generate more revenue from additional costs such as souvenirs, transport services, museum tickets, hotel accommodation, small local restaurants have a higher attendance, especially in the summer season.

## Lessons learnt

- The destination image depends on the general infrastructure
- Detailed information on the internet about disabled facilities helps to choose holiday and places to visit
- The smaller museums can be accessible
- Government policy helps to introduce improvements

## Further information

Predif-turismo Accesible

[www. predif.org](http://www.predif.org)

Andalucia web portal

<http://www.andalucia.org/>

Wheelchair taxi

[www.wheelchairaccessibleholidaytaxis.com](http://www.wheelchairaccessibleholidaytaxis.com)

Tourismo del Almeria

<https://www.turismodealmeria.org/>



visits4u is co-funded by the  
COSME Programme of the European Union